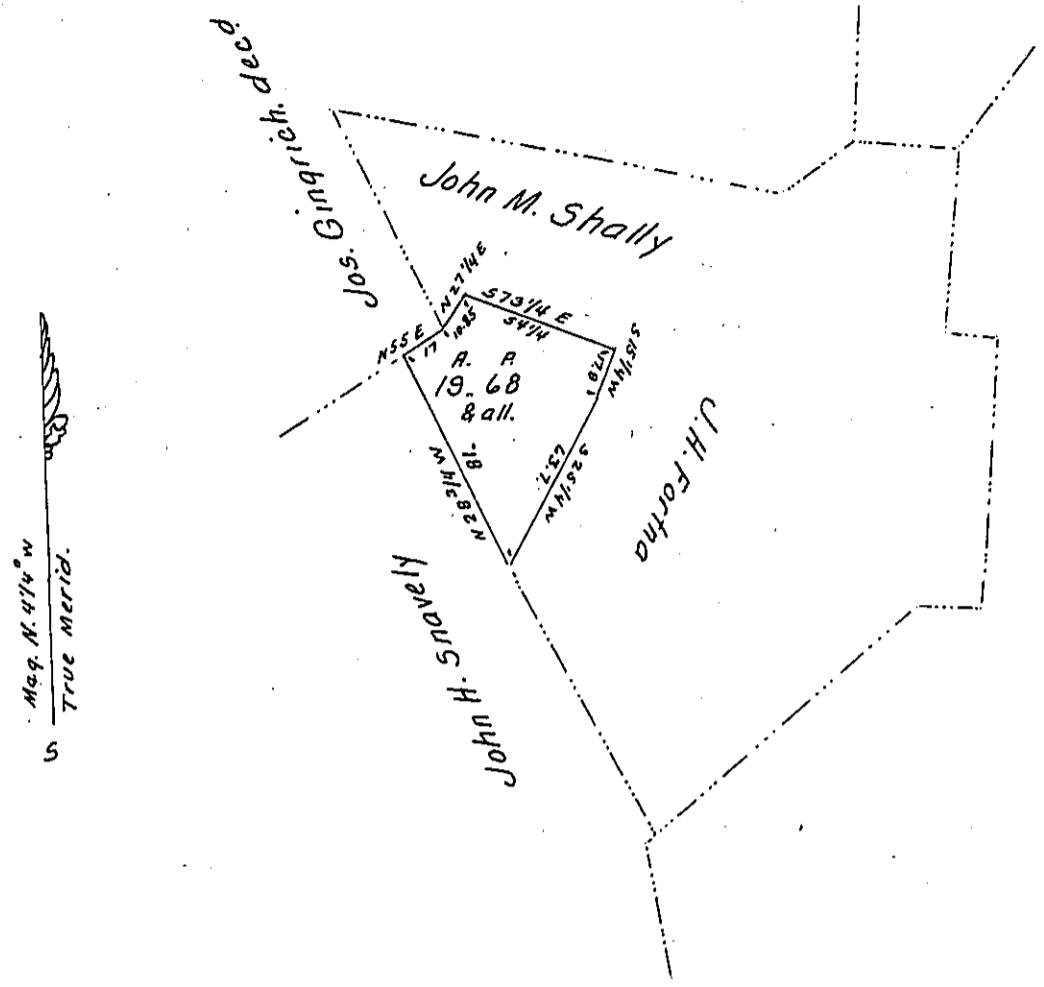


FORM No. 1.



Draft of a tract of land Situate in Swatara township Lebanon County.  
 Containing Nineteen acres and Sixty-eight perches and allowance of  
 Six per cent for Roads &c.

Surveyed in part by Adam Grittinger and by me examined this 29<sup>th</sup> day  
 of October A. D. 1870. and found to be correct. Being a part of a larger  
 tract of 206 acres 123 perches and allowance. originally surveyed  
 in pursuance of a Warrant granted to John Miller dated the 25<sup>th</sup>  
 day of September A. D. 1751.

To Hon. J. M. Campbell } Henry C. Grittinger  
 Surveyor General of Penna. } C. S.

IN TESTIMONY that the above is a copy of the original remaining on file in  
 the Department of Internal Affairs of Pennsylvania, made  
 conformably to an Act of Assembly approved the 16th day of  
 February, 1833, I have hereunto set my Hand and caused  
 the Seal of said Department to be affixed at Harrisburg,  
 this twenty third day of March 1906.

*Isaac R. Brown*  
 Secretary of Internal Affairs.